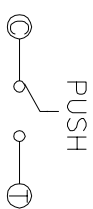
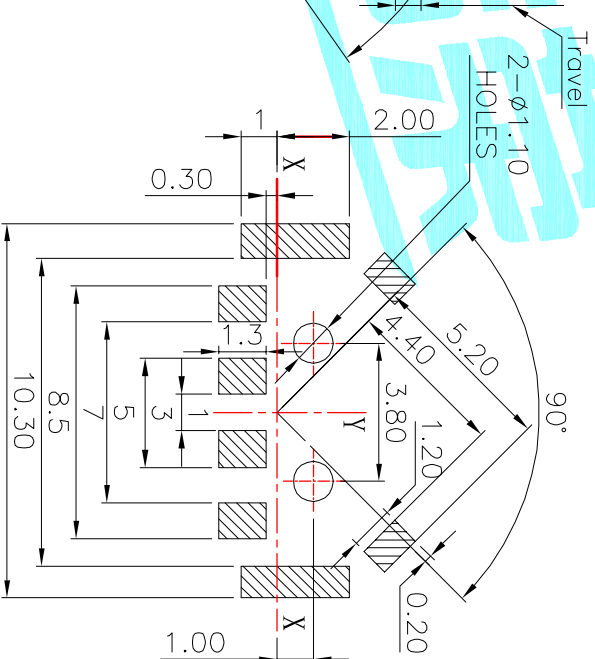
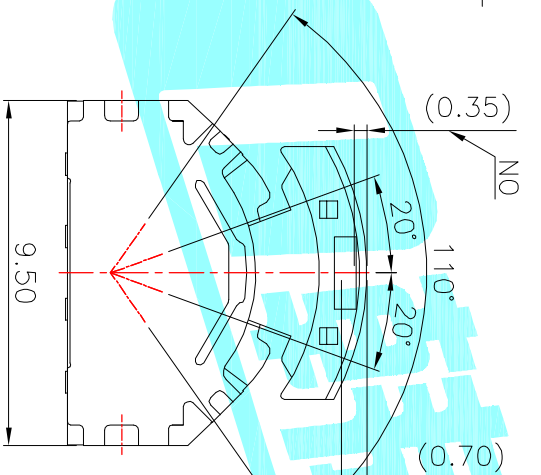
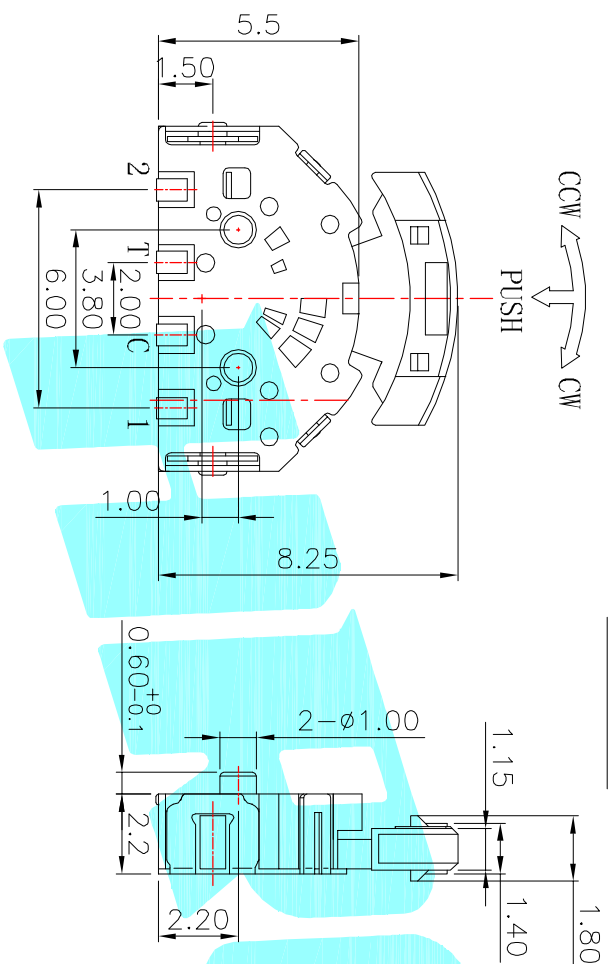


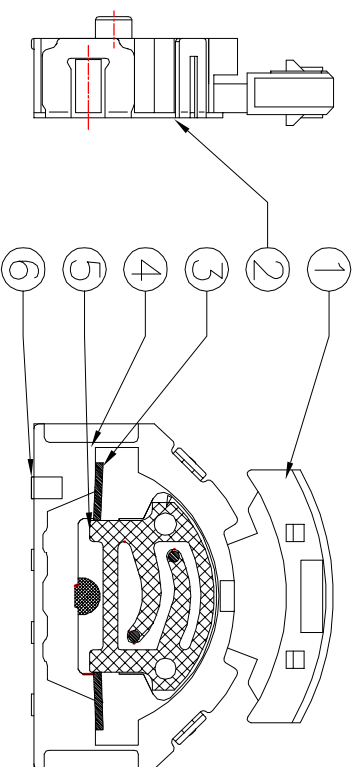
CODE TABLE



NOTE:
Operating Force:
lever portion 100 ± 30 gf
Push portion 205 ± 50 gf



P.C.B Mounting
Pattern Dimension



⑥	Contact	—	1	F.Ag/Brass	—	—
⑤	Terminal	—	4	Brass(0.15t)	Plating silver	—
④	Base	—	1	Nylon	Black	—
③	Spring	—	1	SUS	—	—
②	Cover	—	1	SUS	White	—
①	Keystroke	—	1	Nylon	Black	—

APPROVALS

DRAWN J.X.Zhang 2013/8/5



ELECTRONICS CO.,LTD

CHECKED

APPROVALS

TOLERANCES ARE 30~12.5 ± 0.30 ANGLE 10~30 ±0.20 5~10 ±0.15 ±2° PART NO. K1-1508SA-02 SCALE: 1:1

ECN NO.	REV.	DATE.	DESCRIPTION.	CHANGE.	CHECK.	APPRO.
	A		NEW			