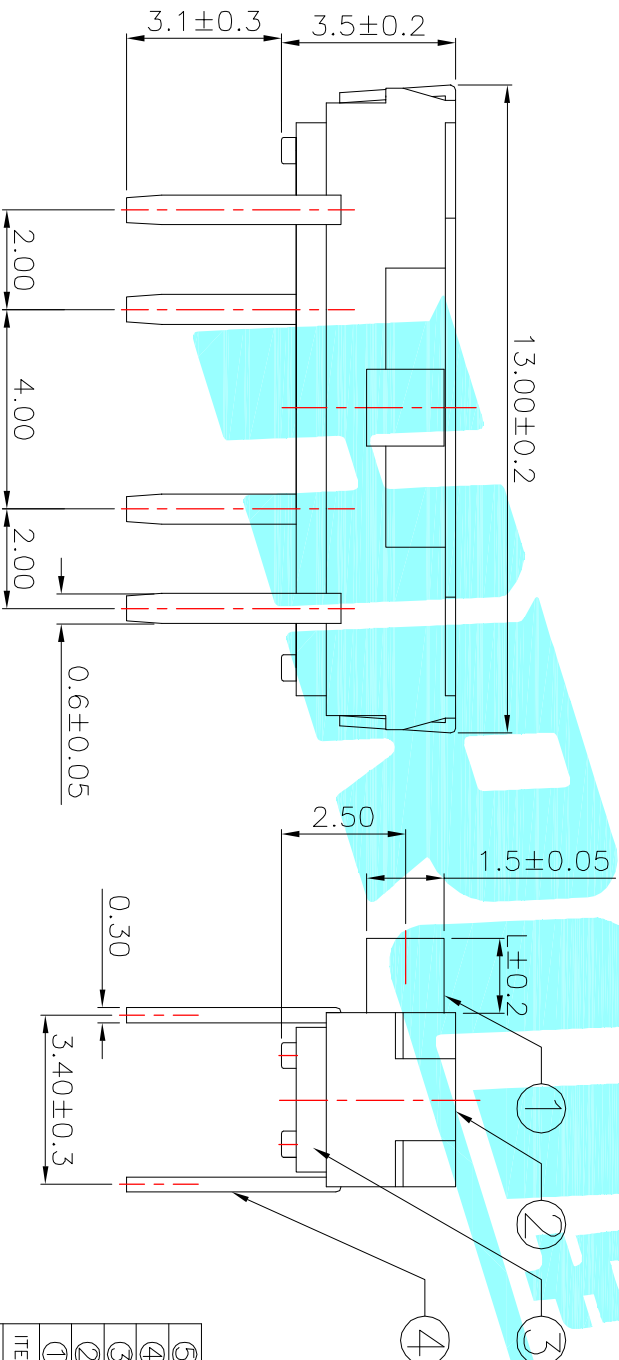


PCB Layout (Pattern side)

Circuit Diagram



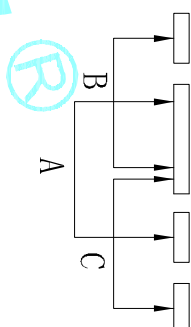
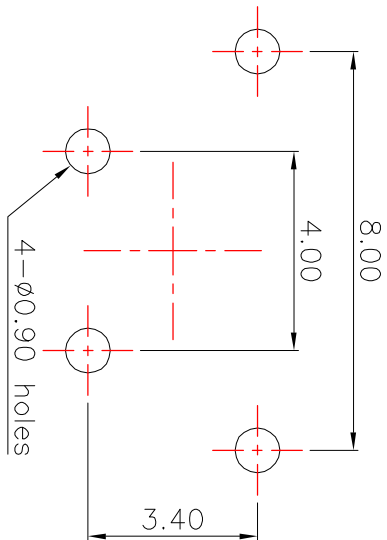
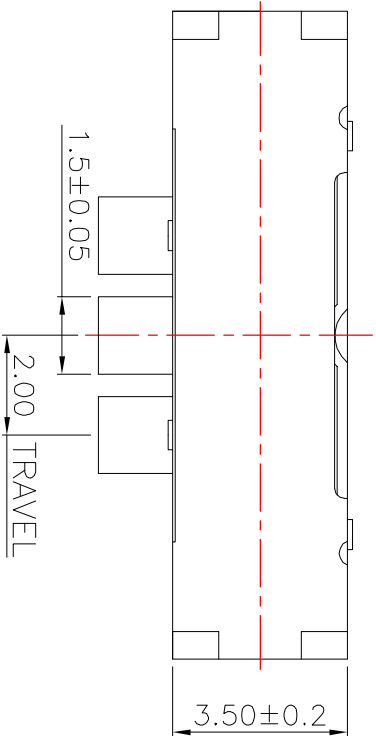
PART NO.	L	Operating force
K3-1346D-F□	2	250±100gf
K3-1346D-K□	3	
K3-1346D-L□	4	

□: 1.Black 2.White

ITEM	PART NAME	TER'NO.	QTY.	MATERIAL	FINISHING	REMARK
⑤	Contact Spring	—	1	Beryllium copper	Ag Plated	—
④	Terminal	—	4	Brass Strip	Ag Plated	—
③	Base	—	1	NYLON	Black	—
②	Cover	—	1	SUS	Natural	—
①	KNOB	—	1	NYLON	White	—

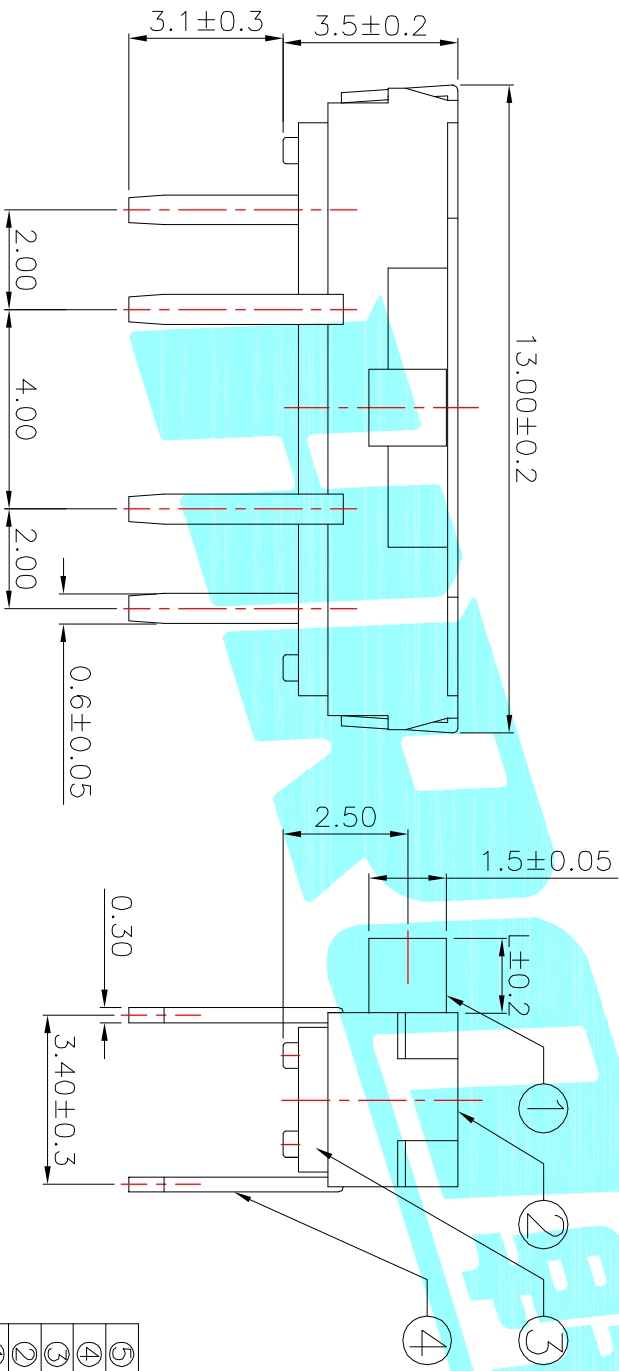
APPROVALS		DATE	TITLE:	
DRAWN	J.X.Zhong	2013/9/28	TOGGLE SWITCHES	
CHECKED			ELECTRONICS CO.,LTD	
APPROVALS			HROE	

ECN NO.	REV.	DATE.	DESCRIPTION.	CHANGE.	CHECK.	APPRO.	TOLERANCES ARE	ANGLE	UNIT:	SCALE:	PROJ:	SHEET
	A		NEW				30~12.5 ±0.30	±2°	mm	1:1	OK	1 OF 1
							10~30 ±0.20					
							5~10 ±0.15					
							~5 ±0.10					



PCB Layout(Pattern side)

Circuit Diagram



PART NO.	L	Operating force
K3-1346E-F2	2	250±100gf
K3-1346E-K2	3	
K3-1346E-L2	4	

ITEM	PART NAME	TER'NO.	QTY.	MATERIAL	FINISHING	REMARK
⑤	Contact Spring	—	1	Beryllium copper	Ag Plated	—
④	Terminal	—	4	Brass Strip	Ag Plated	—
③	Base	—	1	NYLON	Black	—
②	Cover	—	1	SUS	Natural	—
①	KNOB	—	1	NYLON	White	—

APPROVALS		DATE
DRAWN	J.X.Zhang	2013/9/28

ECN NO.	REV.	DATE.	DESCRIPTION.	CHANGE.	CHECK.	APPRO.
	A		NEW			

APPROVALS		TOLERANCES ARE	ANGLE	UNIT:	SCALE:	PROJ:
CHECKED		30~12.5 ±0.30	±2°	mm	1:1	①
		10~30 ±0.20				
		5~10 ±0.15				
		~5 ±0.10				



ELECTRONICS CO.,LTD

TOGGLE SWITCHES

TITLE:

PART NO.

SHEET 1 OF 1