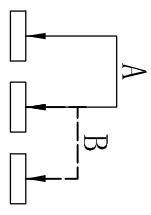


PCB Layout (Pattern side)

Note:
 1. Operating force: 250±100gf
 2. Travel: 2.70mm

Circuit Diagram



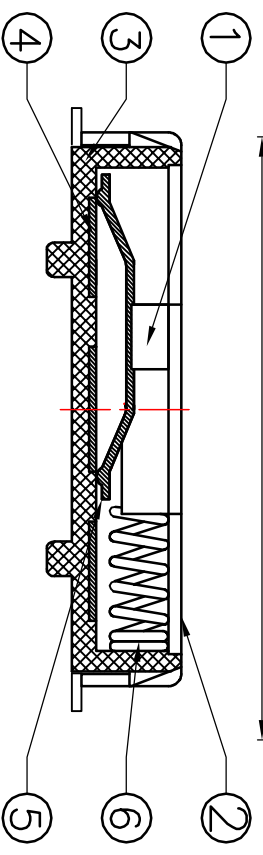
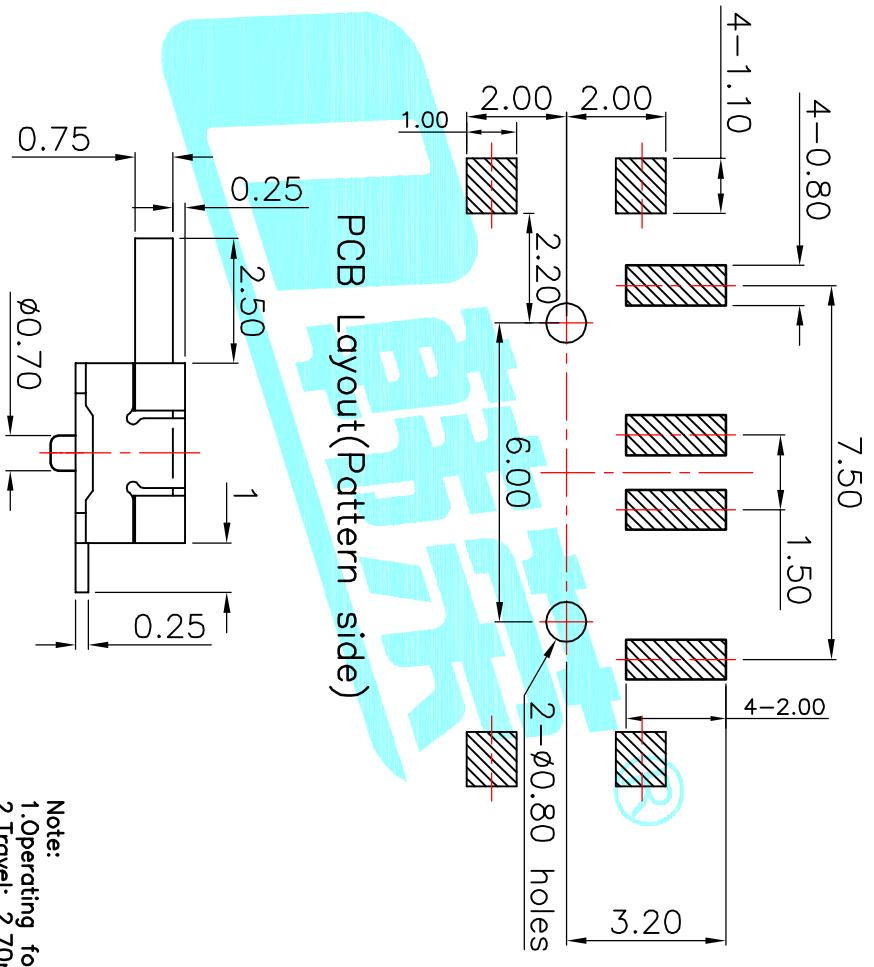
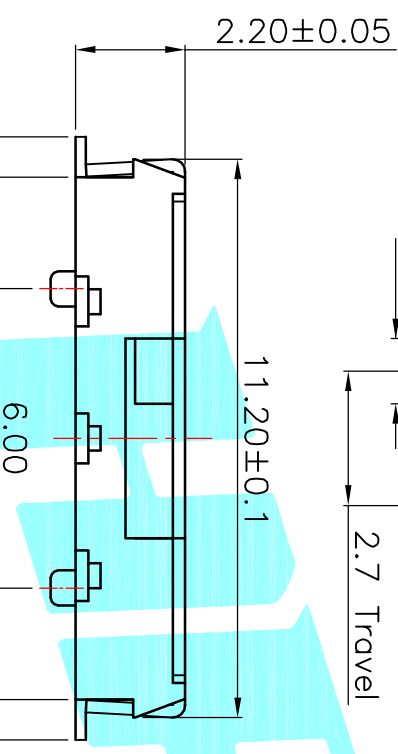
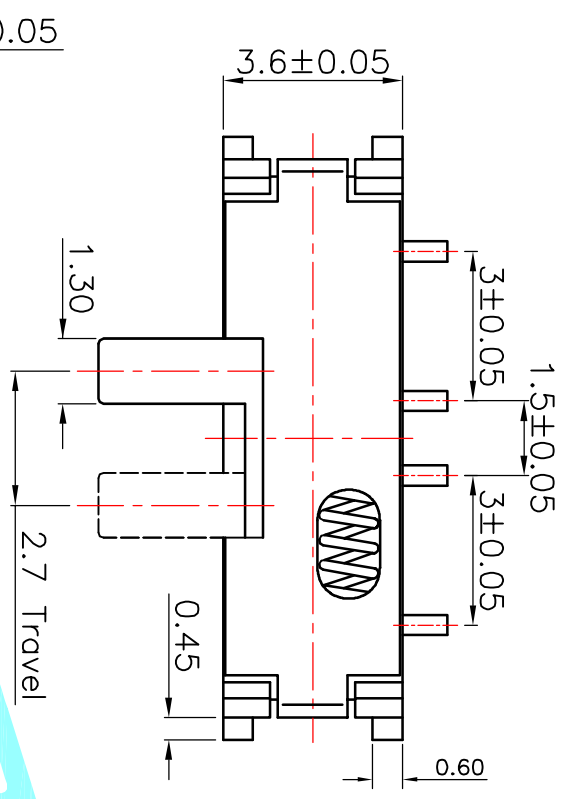
ITEM	PART NAME	TER'NO.	QTY.	MATERIAL	FINISHING	REMARK
⑥	Spring Plate	—	1	SUS	Natural	—
⑤	Contact Spring	—	1	Phosphor Bronze	Ag Plated	—
④	Terminal	—	3	Brass Strip	Ag Plated	—
③	Base	—	1	NYLON	Black	—
②	Cover	—	1	SUS	Natural	—
①	Knob	—	1	LCP	Black	—

APPROVALS	DATE
DRAWN J.X.Zhang	2013/10/10

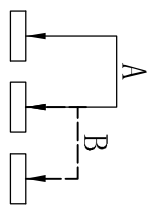
CHECKED		TITLE:	
APPROVALS		TOGGLE SWITCHES	
TOLERANCES ARE	30 ^{±0.15} 10 ^{±0.20} 5 ^{±0.15} ~ 5	ANGLE	PART NO. K3-1391R1-R1
		UNIT: mm	SCALE: 1:1
		±Z'	DRAWING NO.
			SHEET 1 OF 1

ECN NO.	REV.	DATE.	DESCRIPTION.	CHANGE.	CHECK.	APPRO.
	A		NEW			

OKHRO
 ELECTRONICS CO., LTD



Circuit Diagram

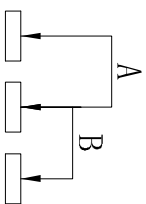
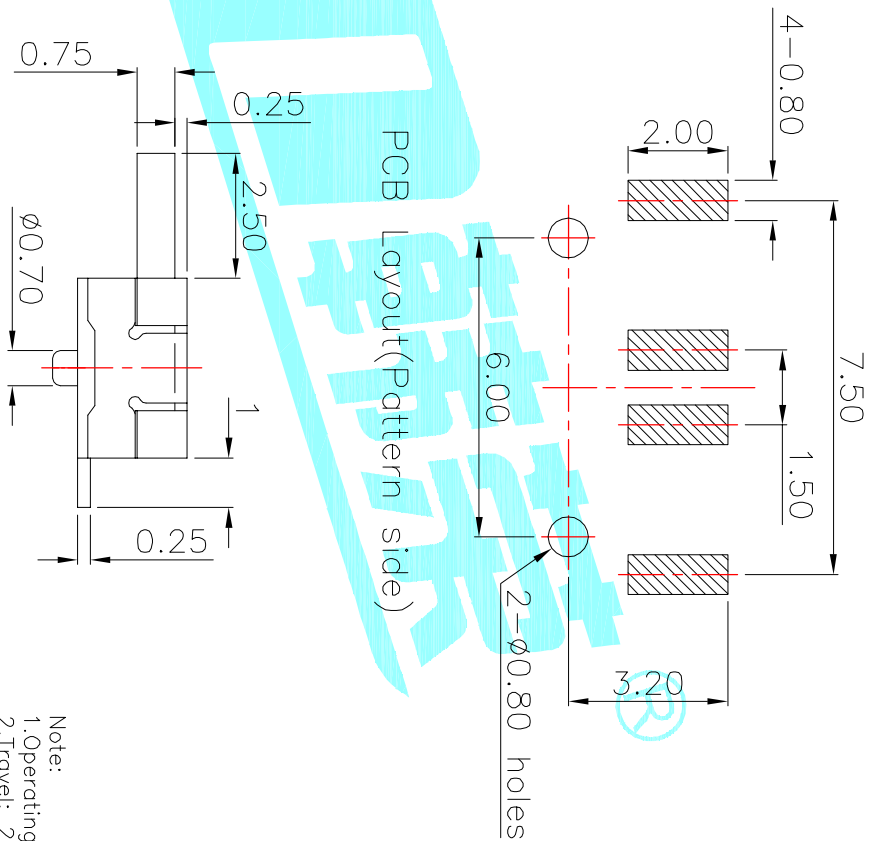
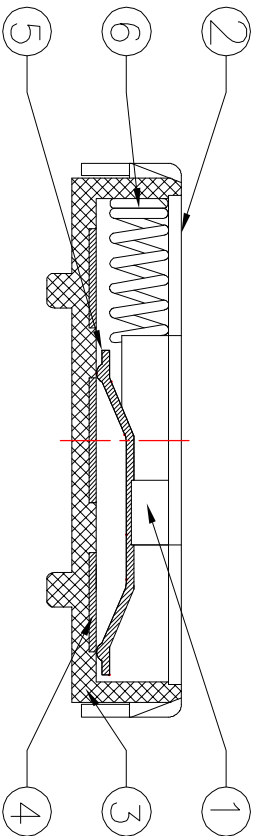
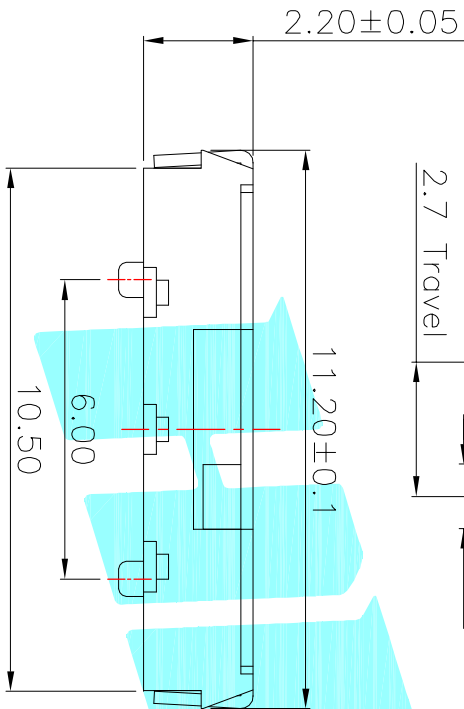
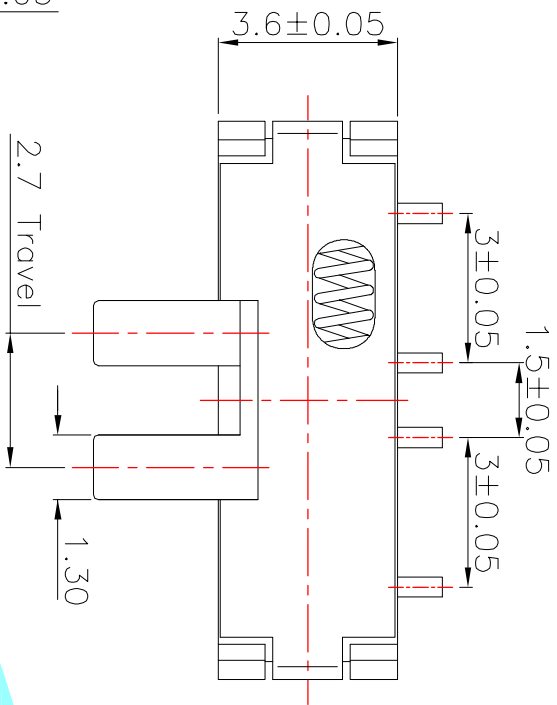


Note:
 1. Operating force: 250±100gf
 2. Travel: 2.70mm

ITEM	PART NAME	TER'NO.	QTY.	MATERIAL	FINISHING	REMARK
⑥	Spring Plate	—	1	SUS	Natural	—
⑤	Contact Spring	—	1	Phosphor Bronze	Ag Plated	—
④	Terminal	—	3	Brass Strip	Ag Plated	—
③	Base	—	1	NYLON	Black	—
②	Cover	—	1	SUS	Natural	—
①	Knob	—	1	LCP	Black	—

APPROVALS		DATE	TITLE:	
DRAWN	J.X.Zhang	2013/10/10	TOGGLE SWITCHES	
CHECKED			ELECTRONICS CO.,LTD	

ECN NO.	REV.	DATE.	DESCRIPTION.	CHANGE.	CHECK.	APPRO.	TOLERANCES ARE	ANGLE	PART NO.	SCALE:	PROJ.	SHEET
	A		NEW				30°±0.1°	±0.30	K3-1391L1-R1	1:1	PROJ. 10	1 OF 1
							10~30	±0.20				
							5~10	±0.15				
							~5	±0.10				



Circuit Diagram

Note:
 1. Operating force: 250±100gf
 2. Travel: 2.70mm

ITEM	PART NAME	TER'NO.	QTY.	MATERIAL	FINISHING	REMARK
⑥	Spring Plate	—	1	SUS	Natural	—
⑤	Contact Spring	—	1	Phosphor Bronze	Ag Plated	—
④	Terminal	—	3	Brass Strip	Ag Plated	—
③	Base	—	1	NYLON	Black	—
②	Cover	—	1	SUS	Natural	—
①	Knob	—	1	LCP	Black	—

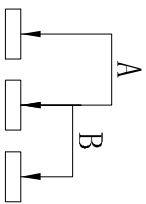
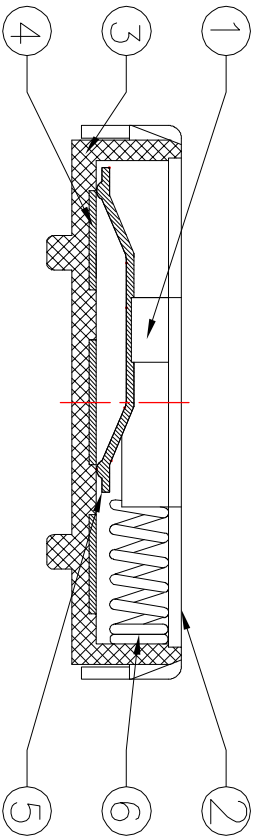
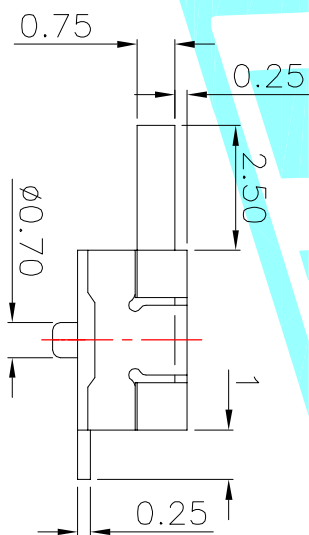
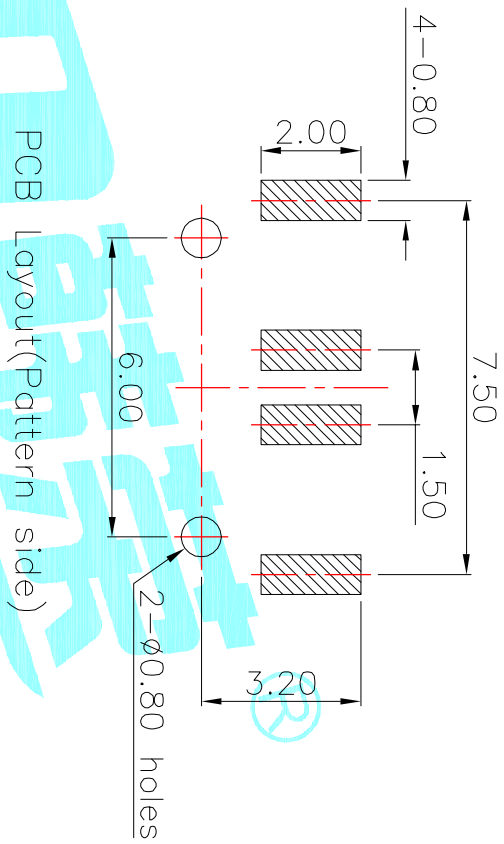
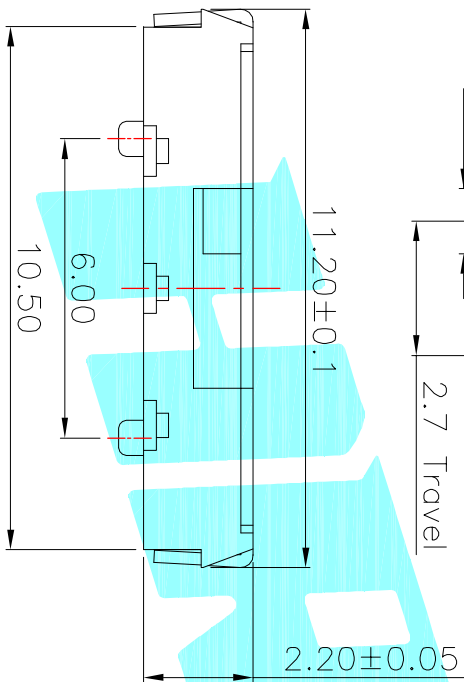
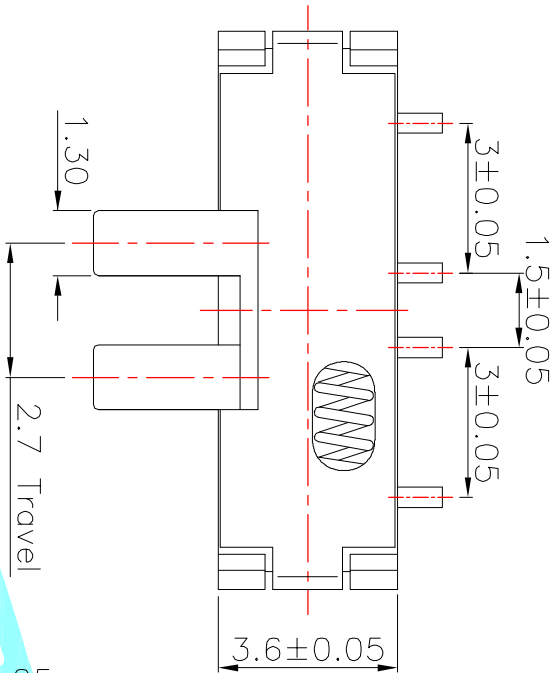
APPROVALS		DATE
DRAWN	J.X.Zhang	2013/10/10

CHECKED		TITLE:	
APPROVALS		TOGGLE SWITCHES	
TOLERANCES ARE		PART NO.	K3-1391R-R1
30~12.5	±0.30	SCALE:	1:1
10~30	±0.20	UNIT:	mm
5~10	±0.15	DRAWING NO.	—
~5	±0.10	SHEET	1 OF 1

ECN NO.	REV.	DATE.	DESCRIPTION.	CHANGE.	CHECK.	APPRO.
—	A	—	NEW	—	—	—



OKHRO ELECTRONICS CO., LTD



Circuit Diagram

Note:
 1. Operating force: 250±100gf
 2. Travel: 2.70mm

ITEM	PART NAME	TER'NO.	QTY.	MATERIAL	FINISHING	REMARK
⑥	Spring Plate	—	1	SUS	Natural	—
⑤	Contact Spring	—	1	Phosphor Bronze	Ag Plated	—
④	Terminal	—	3	Brass Strip	Ag Plated	—
③	Base	—	1	NYLON	Black	—
②	Cover	—	1	SUS	Natural	—
①	KNOB	—	1	LCP	Black	—

APPROVALS		DATE	TITLE:	
DRAWN	J.X.Zhang	2013/10/10	TOGGLE SWITCHES	
CHECKED			ELECTRONICS CO.,LTD	
APPROVALS			HRO®	

ECN NO.	REV.	DATE.	DESCRIPTION.	CHANGE.	CHECK.	APPRO.	TOLERANCES ARE	ANGLE	UNIT:	SCALE:	DRAWING NO.	SHEET
—	A	—	NEW	—	—	—	30~12.5 ±0.30	±2°	mm	1:1	—	1 OF 1
—	—	—	—	—	—	—	10~30 ±0.20	—	—	—	—	—
—	—	—	—	—	—	—	5~10 ±0.15	—	—	—	—	—